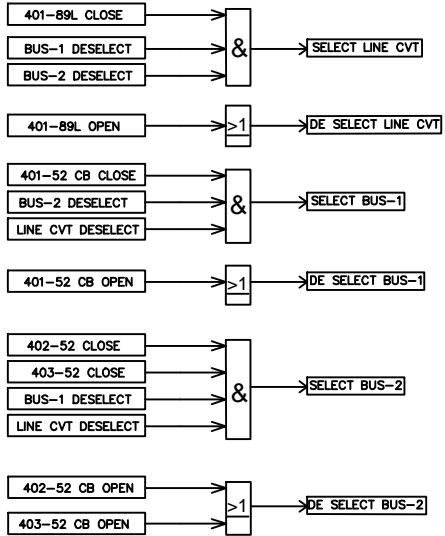


**VT SELECTION LOGIC IN BCU**

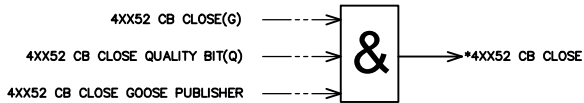
SWITCHGEAR/VT SELECTION RELAY STATUS TO BCU

COMMAND FROM BCU TO VT SELECTION RELAY

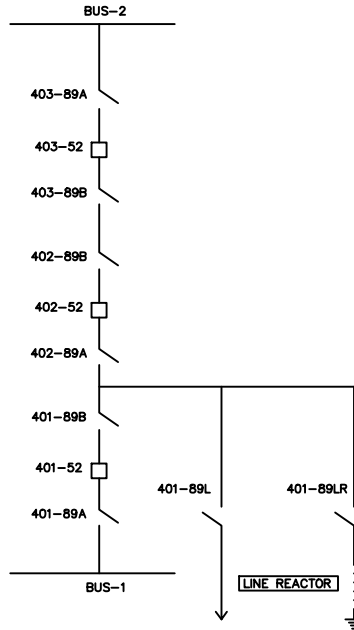


**NOTE**

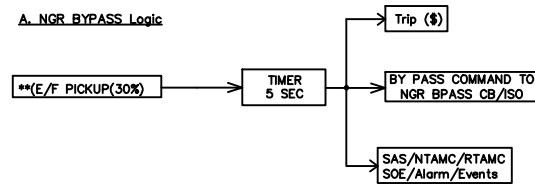
1. ALL THE CB/ISOLATOR STATUS MUST BE DOUBLE POINT PROCESSED SIGNALS.
  2. (\*) IF VIRTUAL INPUTS ARE UTILISED FOR SELECTION LOGIC THEN QUALITY & GOOSE PUBLISHER INPUTS MUST BE TAKEN FOR THE PROCESSING OF GOOSE SIGNALS.
- SAMPLE LOGIC FOR "4XX52 CB CLOSE" SIGNAL IS SHOWN BELOW.



**EXAMPLE--400KV DIA**

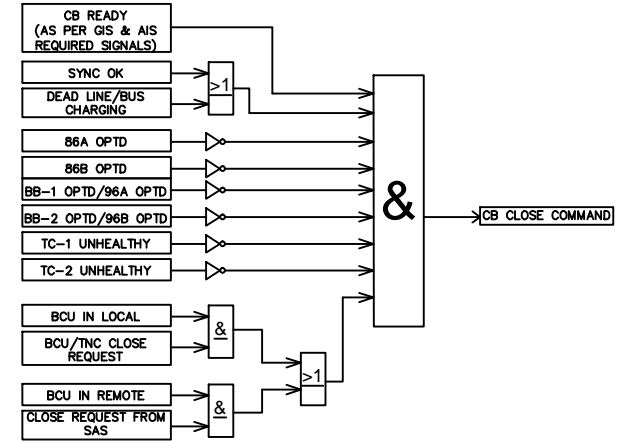


**A. NGR BYPASS Logic**



\*\* E/F FUNCTION SHOULD BE AS PER TEMPLATE. ONLY UNUSED E/F STAGE TO TRIPPING HAS TO BE CONFIGURED FOR NGR BYPASS COMMAND

**INDICATIVE CB CLOSE SOFTWARE INTERLOCK LOGIC IN BCU**



**INDICATIVE CB HARDWARE INTERLOCK LOGIC IN CRP**

